



clothing



Copyright © 2014 Doll Tag Clothing

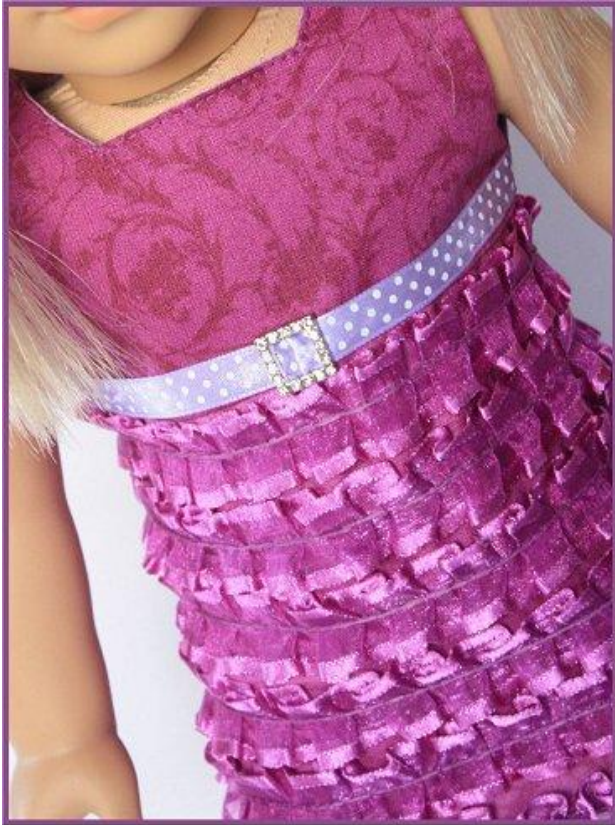
# Simple Ruffle Dress



**Step-by-Step  
PDF Sewing  
Pattern and  
Instructions to  
fit 18" dolls**

**Skill level:  
Intermediate**

**Use Pre-ruffled  
Fabric or  
Make your  
own ruffles**



a Doll Tag Clothing  
pattern from PixieFaire.com



Pattern Designed by Doll Tag Clothing  
Dolltagclothing1@gmail.com

Download patterns from [www.pixiefaire.com](http://www.pixiefaire.com) and free crafts and patterns for dolls from [www.dollplaysa.com](http://www.dollplaysa.com)

**About File Sharing** - You have purchased 1 copy of this digital product from Doll Tag Clothing and Pixie Faire for your personal use. You do not have permission to copy, share or sell this pattern or parts thereof. You do not have permission to give it to someone else in any form. Selling or giving this pattern away or parts thereof violates our copyright and is wrong. © 2014 Doll Tag Clothing - All right reserved.

*These patterns are intended for personal use, not for large scale commercial purposes or manufacturing. To inquire about using them for work from home selling on an individual basis, please email [support@pixiefaire.com](mailto:support@pixiefaire.com) and request the Partnership Terms and Agreement document.*

Doll Tag Clothing is not affiliated with American Girl® dolls. No endorsement is implied.

---

## INDEX

Cover pages Page 1 - 2  
Pattern Details Page 3 - 4  
Dress / Top Instructions Page 5 - 11

Pattern Pieces Page 12 - 13  
Summary of Instructions Page 14 - 15

## GETTING STARTED

### Pattern Description

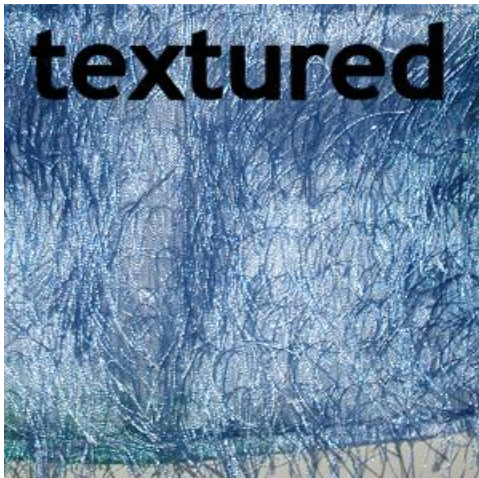
1. **OPTION A:** Make a dress with ruffles using this pattern. You can use pre-ruffled fabric! Then you can make this dress in 30 minutes!
2. **OPTION B:** Be creative and add your own ruffles using various trims, following the simple instructions.
3. **2 LENGTHS:** There is a cutting line if you prefer to make top instead of a dress. Instructions are the same for both.

### Doll Model Size

The model I use to fit my patterns is an American Girl® Doll, Julie and she has a fuller body. Here are her measurements if you want to compare: Chest - 11 ¼"; Waist - 11"; Hip - 12 ½"

### Fabric Guide

- Woven fabric works best for this pattern. Cotton fabrics are just great to play with!
- **OPTION A:** Look out for pre-ruffled fabrics or textured fabrics for the skirt part



## Trims you can Use

- OPTION B: Make your own ruffles by using any fun trim you enjoy.
- You can add all sorts of trims as ruffles to your dress. Look in the trim section of your fabric store.



## You will need

- Bodice Fabric - 2x ( $\frac{1}{4}$  x  $\frac{1}{4}$  yard) - 1 for the top and 1 for the lining
- For Skirt part:  
Option A: Pre-ruffled fabric - 1x ( $\frac{1}{4}$  x  $\frac{1}{2}$  yard)  
Option B: Fabric 1x ( $\frac{1}{4}$  x  $\frac{1}{2}$  yard)
- Option B: Fringing, trim or pre-ruffled ribbon that is about 1" wide - 100"
- Thread
- Velcro ( $\frac{5}{8}$ " width - cut in half to get about  $\frac{1}{4}$ " wide)
- Ribbon for "belt band" -  $\frac{1}{2}$ " wide - 7.5"
- Slider Buckle - 1x - The belt ribbon must be able to slide through it

## Print and preparing the pattern pieces

- Pattern pieces are found at the end of the instructions. Check the scale of your pattern. Make sure your printer scale is set to "none".
- If you are using A4 Paper set and your scale is not correct set your printer to print "Letter" size
- Simply cut out the pattern pieces or trace them onto pattern paper.

## Cut the fabric

- 1x dress bodice front - main fabric (on fold)
- 2x dress bodice back - main fabric
- 1x dress bodice front - lining fabric (on fold)
- 2x dress bodice back - lining fabric
- 1x dress skirt - fabric (or pre-ruffled fabric)



## SEWING INSTRUCTIONS

- ❖ Sew a ¼” seam unless otherwise stated.
- ❖ Secure the beginning and end of your seams with a backstitch.
- ❖ Note: “Finish off the seam” - This is to prevent fraying. If you do not have a serger then use a zigzag stitch on your machine. Fray check can also be used.
- ❖ A nice zigzag to use on your machine: Set your stitch length 2 and your stitch width 2.
- ❖ “Finish off the seam” for 2 layers: *Trim* the seam slightly and zigzag.
- ❖ There are 2 options to finish off the dress skirt.  
Follow the instruction of the option you prefer.  
A: Dress using pre-ruffled fabric  
B: Make your own ruffles



## SEW DRESS BODICE

1. With right sides together match the shoulder seams of the front and back panels and sew. Fold seam open. Repeat for the lining.



2. With right sides together match the 2 front pieces together - fabric and lining.
3. Pin into position before sewing. Pin around the neckline and armholes to keep it neat.



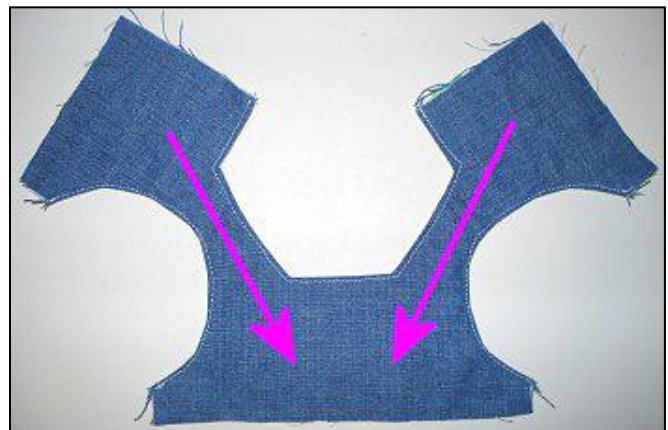
4. Sew closed the neck edge and armholes.



5. Clip the curve in a few places all around the armhole. Clip the inner corners of the neckline. This will make for a neater finish when we turn the bodice. Be careful not to cut through the stitching.



6. Turn the bodice inside out. Follow the directions in the photo to turn.



7. Fold the seams flat and topstitch the edge of the neckline.



8. Fold open the seams under the armholes, separating the fabric from the lining.
9. Cut a ribbon 1" longer than the bottom of the top. "Burn" the ends to prevent fraying.
10. Slide on a buckle to the centre of the ribbon.
11. Pin the ribbon into position on the bottom edge of the top. Be sure to leave 3/8" at the bottom for seam allowance when adding the skirt. You can baste the ribbon in place or just use the pins.



12. With right sides together pin the back to the front - under the armhole.
13. Sew. Repeat for the other underarm seam.



14. Fold the lining and fabric with wrong sides together. The under arm seam is now complete.
15. Press the armholes.
16. Optional - Top Stitch the armholes.

**The bodice is now complete.**



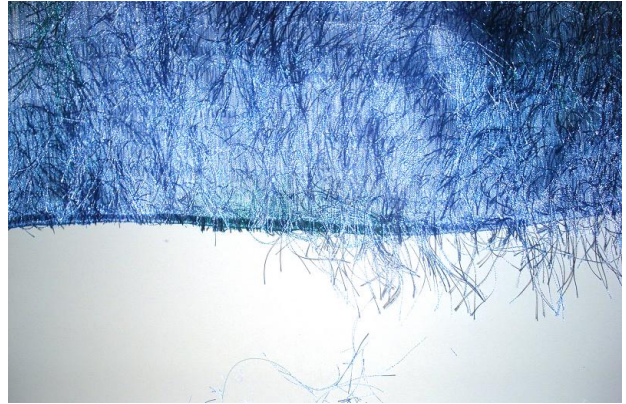
## PREPARE DRESS BOTTOM - SKIRT

*Option A: Using pre-ruffled fabric*

*Option B: Add your own ruffles*

### A: Using pre-ruffled fabric

1. Cut out one skirt from the pre-ruffled fabric. Note the direction of the ruffles. Be sure to cut your skirt with the ruffles falling downward. The “narrow” part on the pattern is the top of the skirt.
2. Hem the skirt. Fold the bottom edge under two times  $\frac{1}{4}$ ” and sew.  
*TIP: Be careful to fold your ruffles out the way and not catch them in the hem.*
3. With textured fabric you may need to trip the bottom “fluff” of frays.
4. Now skip to “Complete the Dress” section.



### B: Add your own ruffles

1. Lay the cut skirt down on your table right side up
2. Place your trim at the top edge of the panel and mark.
  - The ribbon trim I used has a ruffle at the top and bottom so I placed it  $\frac{1}{4}$ ” from the top seam leaving the seam allowance.
  - Some fringe and trim can be aligned with the top edge and then sewn into the seam when the bodice is added. Note: If the trim is really thick then place it  $\frac{1}{4}$ ” from the top.





3. Take a second piece of trim and mark the next line. Using a marking pen and ruler continue to mark where you will sew on your trim. Remember fringes need to be overlapped so be sure to mark them under one another.



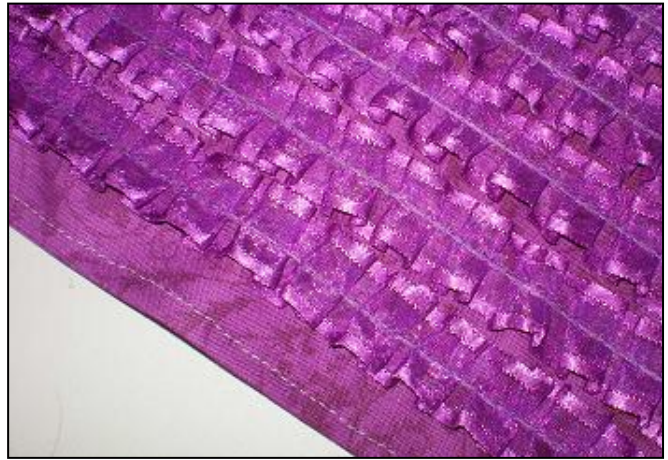
4. Start sewing on your trim. Secure the ends with a backstitch. You can use a straight stitch or a small zigzag.



5. When sewing on the next rows of fringe - fold the previous rows out the way so you can sew in the new rows underneath - for the overlap.



6. Before sewing on your last row - sew your hem. You might need to adjust it according to the length of your last row of trim.
7. Hem the skirt. Fold the bottom edge under two times  $\frac{1}{4}$ " and sew.  
*TIP: Be careful to fold your ruffles out the way and not catch them in the hem.*
8. Sew on the last length of trim.
9. Now continue with the "Complete the Dress" section.

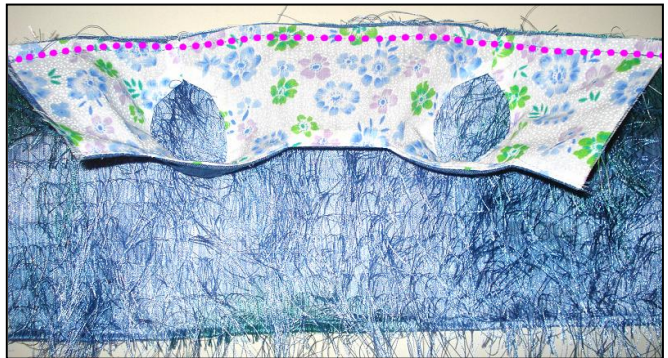


## COMPLETE THE DRESS

1. With right sides together pin the bottom edge of the bodice to the top edge of the skirt.  
*TIP: If you have trim that is open to the top, then be careful to fold your ruffles and belt (if you added one) out the way and not catch them in the seam.*



2. Sew and finish off the seam.



3. At the back fold seam toward the bodice and top stitch close to the edge.



4. Finish off the 2 back seams with a zigzag or serger.
5. With right sides together match the back left and right. Sew from the bottom up and stop  $4\frac{1}{2}$ " from the top.







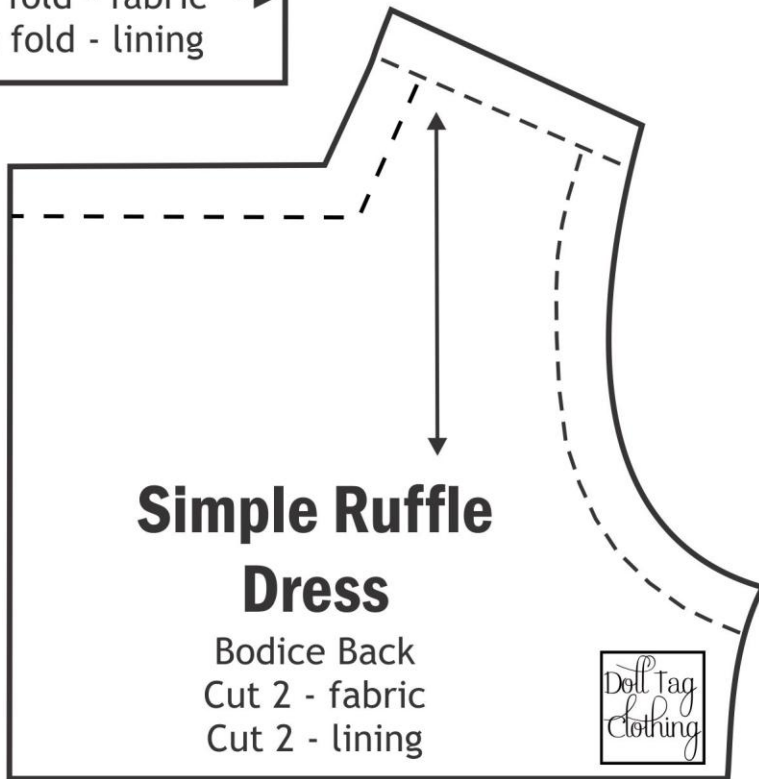
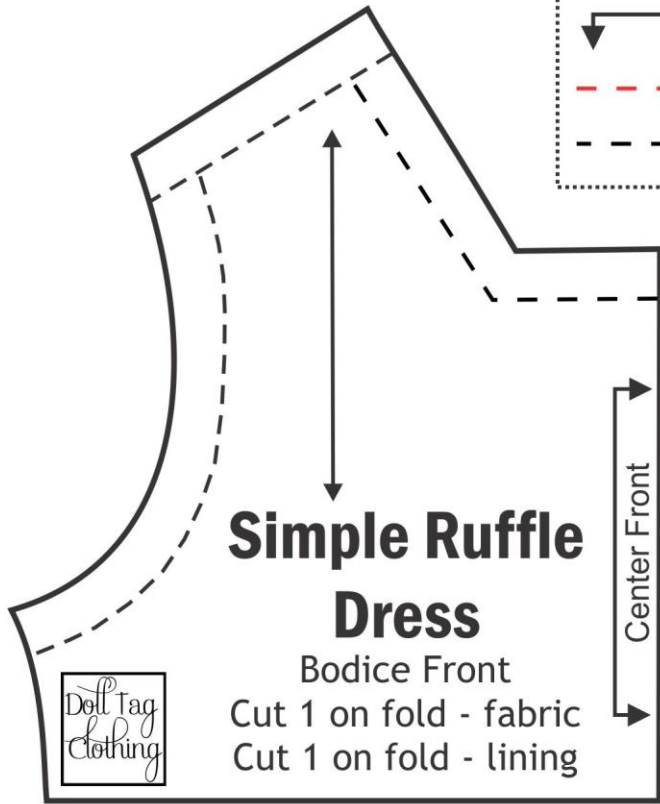
6. Cut the Velcro 4". Velcro that is  $\frac{5}{8}$ " wide - cut in half to get about  $\frac{1}{4}$ " wide.
7. Left back panel: fold fabric over  $\frac{1}{4}$ " and sew Velcro on the right side of the fabric. Stitch on all four sides.
8. Right back panel: fold fabric over  $\frac{1}{4}$ " and sew Velcro on the wrong side of the fabric. Stitch on all four sides.
9. The right panel overlaps the left panel and closes the dress back.

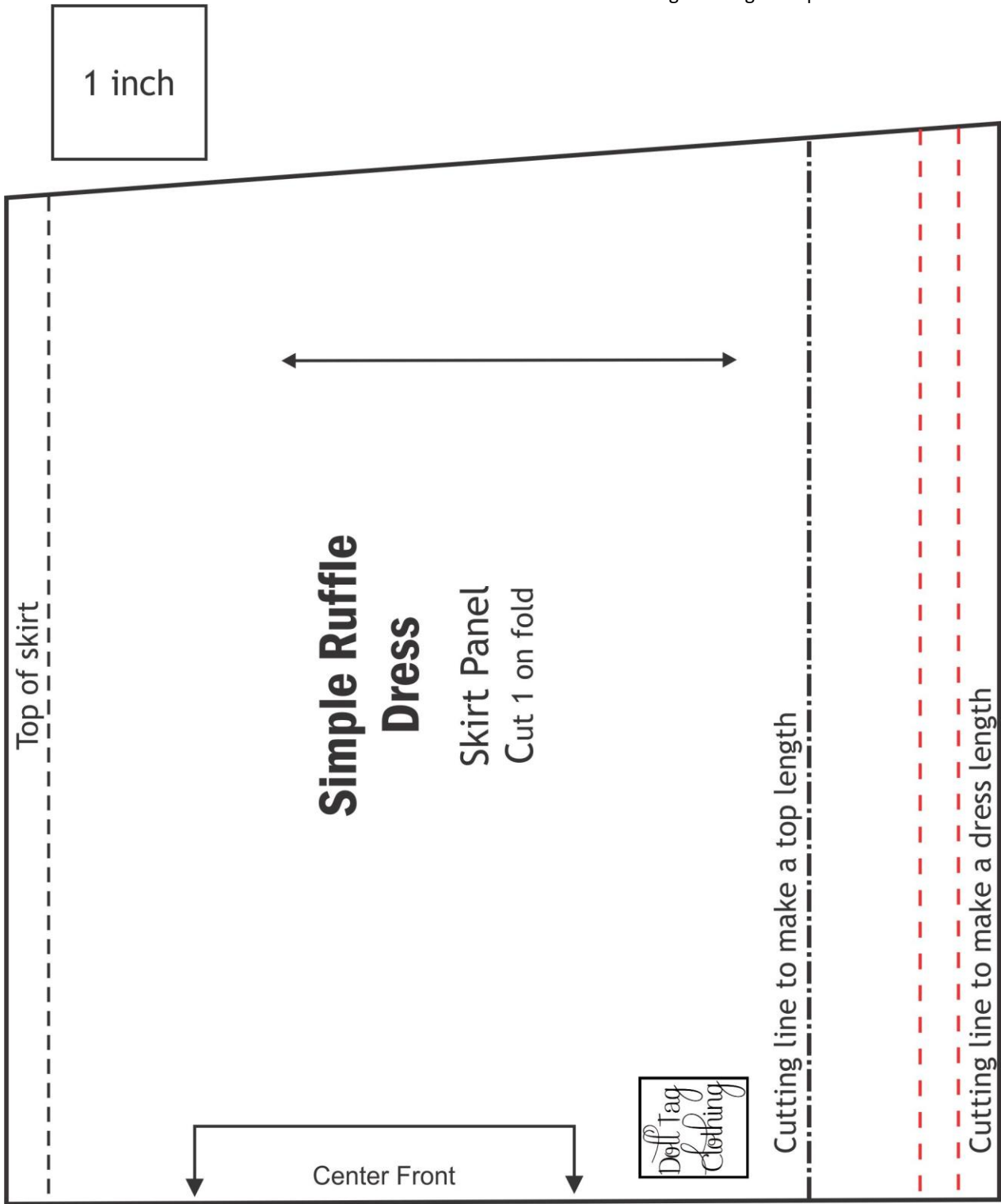
*Your dress is now complete and ready to be added to your doll's wardrobe!*



**Pattern Symbols**

-  Grainline
-  Place on fold
-  Fold line
-  Stitch line





## **SUMMARY OF INSTRUCTIONS**

### **SEW DRESS BODICE**

1. With right sides together match the shoulder seams of the front and back panels and sew. Fold seam open.  
Repeat for the lining.
2. With right sides together match the 2 front pieces together - fabric and lining.
3. Pin into position before sewing. Pin around the neckline and armholes to keep it neat.
4. Sew closed the neck edge and armholes.
5. Clip the curve in a few places all around the armhole. Clip the inner corners of the neckline. This will make for a neater finish when we turn the bodice. Be careful not to cut through the stitching.
6. Turn the bodice inside out. Follow the directions in the photo to turn.
7. Fold the seams flat and topstitch the edge of the neckline.
8. Fold open the seams under the armholes, separating the fabric from the lining.
9. Cut a ribbon 1” longer than the bottom of the top. “Burn” the ends to prevent fraying.
10. Slide on a buckle to the centre of the ribbon.
11. Pin the ribbon into position on the bottom edge of the top. Be sure to leave 3/8” at the bottom for seam allowance when adding the skirt.  
You can baste the ribbon in place or just use the pins.
12. With right sides together pin the back to the front - under the armhole.
13. Sew. Repeat for the other underarm seam.
14. Fold the lining and fabric with wrong sides together. The under arm seam is now complete.
15. Press the armholes.
16. Optional - Top Stitch the armholes.

The bodice is now complete.

### **PREPARE DRESS BOTTOM - SKIRT**

*Option A: Using pre-ruffled fabric*

*Option B: Add your own ruffles*

#### **A: Using pre-ruffled fabric**

1. Cut out one skirt from the pre-ruffled fabric. Note the direction of the ruffles. Be sure to cut your skirt with the ruffles falling downward. The “narrow” part on the pattern is the top of the skirt.
2. Hem the skirt. Fold the bottom edge under two times ¼” and sew.  
*TIP: Be careful to fold your ruffles out the way and not catch them in the hem.*
3. With textured fabric you may need to trip the bottom “fluff” of frays.
4. Now skip to “Complete the Dress” section.

**B: Add your own ruffles**

1. Lay the cut skirt down on your table right side up
2. Place your trim at the top edge of the panel and mark.
  - The ribbon trim I used has a ruffle at the top and bottom so I placed it ¼” from the top seam leaving the seam allowance.
  - Some fringe and trim can be aligned with the top edge and then sewn into the seam when the bodice is added. Note: If the trim is really thick then place it ¼” from the top.
3. Take a second piece of trim and mark the next line. Using a marking pen and ruler continue to mark where you will sew on your trim. Remember fringes need to be overlapped so be sure to mark them under one another.
4. Start sewing on your trim. Secure the ends with a backstitch. You can use a straight stitch or a small zigzag.
5. When sewing on the next rows of fringe - fold the previous rows out the way so you can sew in the new rows underneath - for the overlap.
6. Before sewing on your last row - sew your hem. You might need to adjust it according to the length of your last row of trim.
7. Hem the skirt. Fold the bottom edge under two times ¼” and sew.
 

*TIP: Be careful to fold your ruffles out the way and not catch them in the hem.*
8. Sew on the last length of trim.
9. Now continue with the “Complete the Dress” section.

**COMPLETE THE DRESS**

1. With right sides together pin the bottom edge of the bodice to the top edge of the skirt.
 

*TIP: If you have trim that is open to the top, then be careful to fold your ruffles and belt (if you added one) out the way and not catch them in the seam.*
2. Sew and finish off the seam.
3. At the back fold seam toward the bodice and top stitch close to the edge.
4. Finish off the 2 back seams with a zigzag or serger.
5. With right sides together match the back left and right. Sew from the bottom up and stop 4 ½” from the top.
6. Cut the Velcro 4”. Velcro that is 5/8” wide - cut in half to get about ¼” wide.
7. Left back panel: fold fabric over ¼” and sew Velcro on the right side of the fabric. Stitch on all four sides.
8. Right back panel: fold fabric over ¼” and sew Velcro on the wrong side of the fabric. Stitch on all four sides.
9. The right panel overlaps the left panel and closes the dress back.

***Your dress is now complete and ready to be added to your doll’s wardrobe!***



Welcome to my Doll World!

Doll Tag Clothing - Doll Patterns - available exclusively from  
[www.pixiefaire.com](http://www.pixiefaire.com)

South African Girl 18" Doll  
available exclusively from  
[www.dollplaysa.com](http://www.dollplaysa.com)

South African Girl   
— Letting Girls be Girls —

Free Doll Patterns and Crafts from  
[www.dollplaysa.com](http://www.dollplaysa.com)



Doll Tag Clothing



Doll Machine Embroidery Designs (Doll's Category)  
[www.hatchedinafrica.com](http://www.hatchedinafrica.com)